

COMMERCIALLY CONFIDENTIAL

# DIAMAND New Installation and Update Instructions

**EQUIPMENT:** DIAMAND

**SUBJECT:** Diamand Installation and Update Instructions

## 1.1 Introduction

The DIAMAND distribution method evolves from 2018 release.

Until 2017 the installation of DIAMAND was done from a DVD (DDRX107M for the year 2017).

From 2018, the installation process changes and the installation program for DIAMAND can only be obtained through download from <https://diamand.my-delphi.com/> website.

The installation program is a single executable file. It will install or update Diamand software and/or applications data.

The present document will guide you through the download and the installation of DIAMAND software and drivers.

Before proceeding with the installation of DIAMAND verify that your computer is matching the [Technical Requirements](#).

## 1.2 Yearly update / First installation process

If you first install DIAMAND or want to upgrade DIAMAND from a previous version (2017 DDRX107M, 2016 DDRX107L, etc...) proceed as described below. If you want to install intermediate update or patch from the "Tool Update" function of DIAMAND refer to [Intermediate Update process](#) section of this document.

### 1.2.1 Download the installation program

The new installation process is easy. After ordering DIAMAND, you will receive an email from your distributor containing :

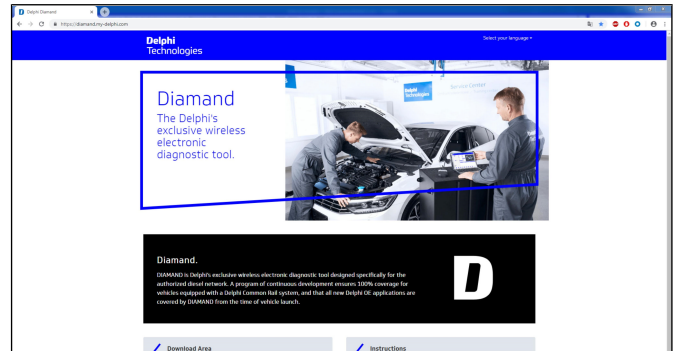
- The activation code with the same format as previous year : XXXXX-XXXXX-XXXXX-XXXXX-XXXXX-XXXXX
- A link to the download website dedicated to DIAMAND software : <https://diamand.my-delphi.com/>

#### CAUTION

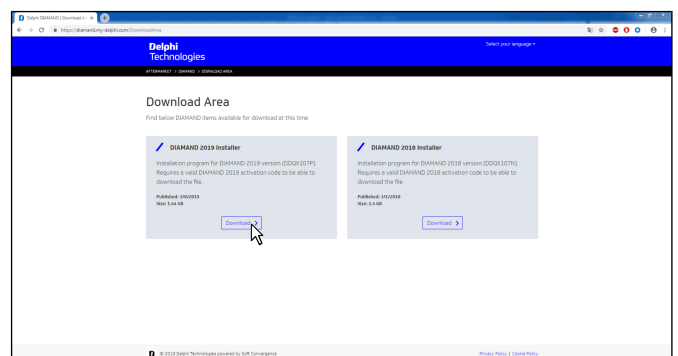
*The installation program can only be downloaded 3 times, it is recommended to keep a copy of the installation program if you need to re-install DIAMAND later on.*

To obtain the DIAMAND installation program proceed as described below.

Visit <https://diamand.my-delphi.com/> and click on "Download Area".



Click the "Download" button on the item named "DIAMAND 20XX Installer".

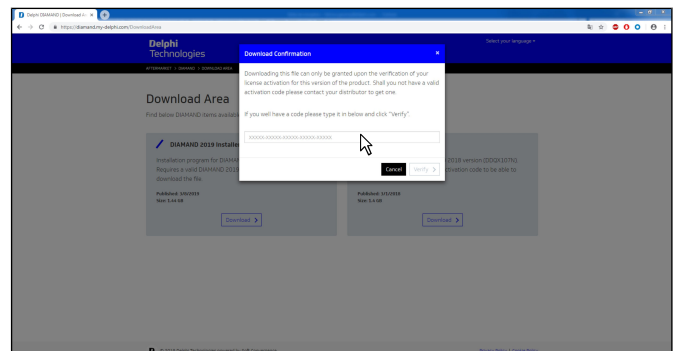


Fill in your activation code and click "Confirm".

*(If you are not asked to fill in activation code, then just click "Confirm")*

**Note:**

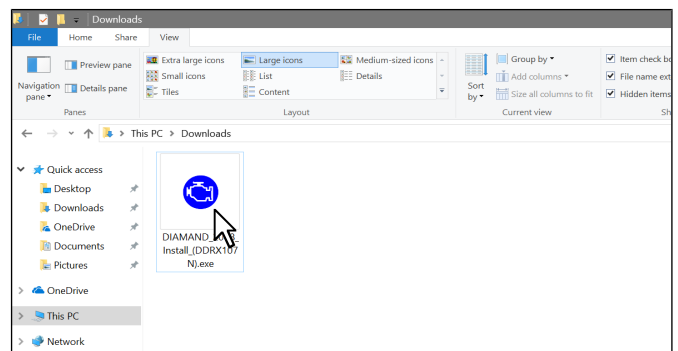
*The actual download process and location depends on your browser and your personal settings.*



**1.2.2 Install DIAMAND**

Once the download is complete run the downloaded file.

**CAUTION**  
Due to Windows security verification, depending on the specification of the computer, it can take up to a couple of minutes before the Installation program actually starts.

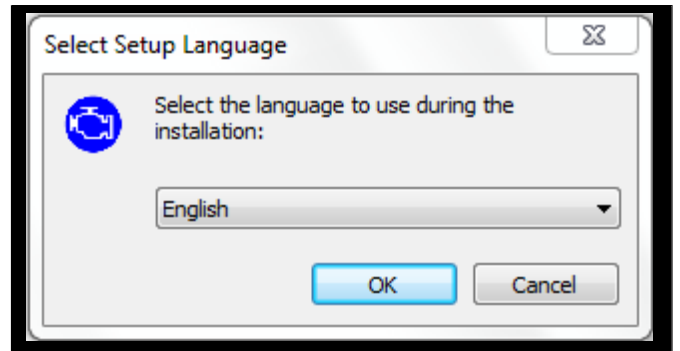


Authorize Windows to run the installation program by clicking "Yes".

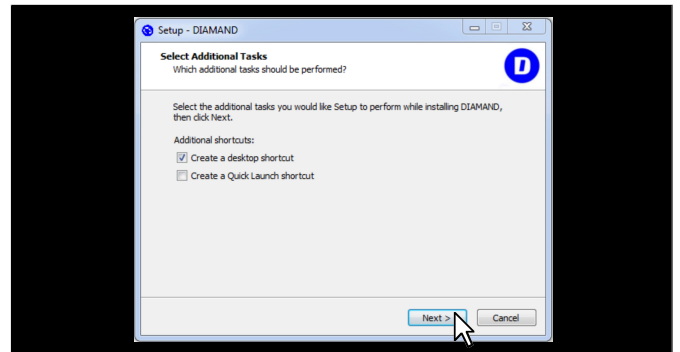
**Note:**  
*Depending on your OS version and settings, this dialog may vary or not be displayed.*



Select the installation language and click OK.

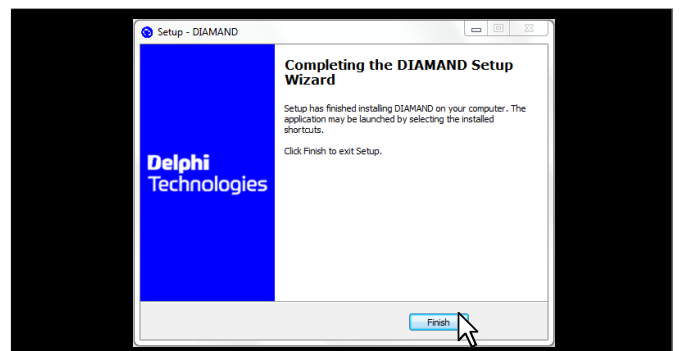


Follow the on-screen instructions and wait for the installation to complete.



When the installation is complete, run DIAMAND and follow the first run configuration and activation steps if required. For more details, refer to the latest version of the DIAMAND Installation Manual DDNX148.

**Note:**  
*The new DIAMAND installation program is a full installer. There is no need to run "Tool Update" function to complete the installation or upgrade as with previous DIAMAND version.*

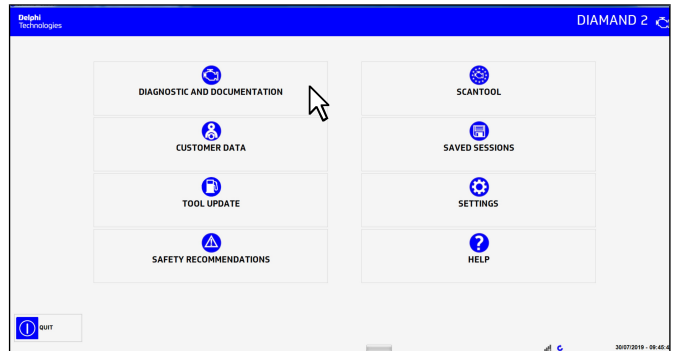


### 1.3 Intermediate Update process

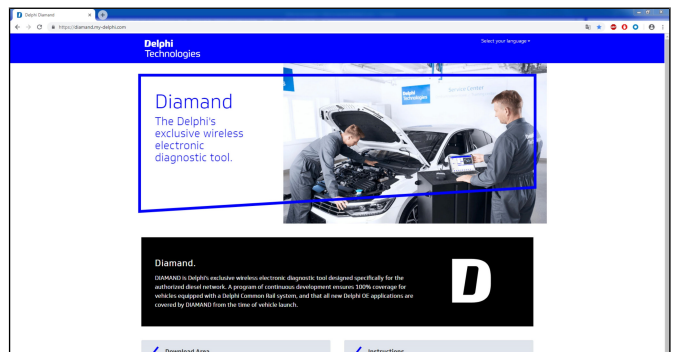
Few changes have been done in Diamand concerning the update from 2018 (2.10.0.0) version.

Clicking on the "Tool Update" button in the DIAMAND Main menu will automatically opens your default web browser on DIAMAND download site <https://diamand.my-delphi.com/>.

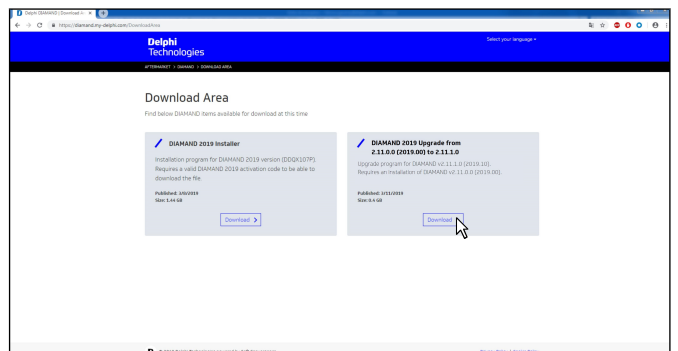
To obtain the DIAMAND update program proceed as described below.



Visit <https://diamand.my-delphi.com/> and click on "Download Area".



Click the "Download" button on the item named "DIAMAND 20XX Upgrade..." if there is one available and applicable to the version of DIAMAND you are running.

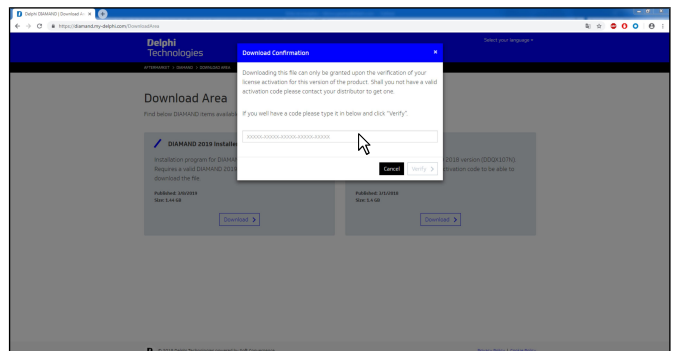


Fill in your activation code and click "Confirm".

*(If you are not asked to fill in activation code, then just click "Confirm")*

**Note:**

*The actual download process and location depends on your browser and your personal settings.*



Once the download is complete run the downloaded file, and follow the procedure described in the "Install DIAMAND" section.

### 1.4 Firmware update

The firmware update function has now moved from the "Tool Update" function to the "Settings" dialog. To check the availability of a firmware update and proceed with it follow the below steps :

- Install a DIAMAND update as described in the above sections
- Go in "Settings" function from the DIAMAND main menu.
- Ensure the VCI is powered and that the connection between the VCI and the computer is configured and functional. For more details, refer to the latest version of the DIAMAND Installation Manual DDNX148.
- In the "Update Firmware" group of the "Hardware" tab, click on update. If an update is available, the firmware will be updated.

### 1.5 Technical Requirements

The following system requirements correspond to the minimum recommended for optimum performance of the DIAMAND program.

Processor	Intel® Core i3 2GHz 3MB Cache or higher
Operating system <sup>1</sup>	Windows 10(*)(**) 32bit and 64bit
	Windows 8 & 8.1 32bit and 64bit
	Windows 7 32bit and 64bit
	Windows Vista 32bit and 64bit
Memory	2 GB or greater
Hard drive:	10 GB available or greater
Display	1280x960 (4/3) or 1440x900 (16/10) or 1920x1080 (16/9) or higher
Internet Connection	2Mb/s bandwidth or more
Connectivity	1 USB 2.0 port free or 1 Serial port for YDT450 or YDT460 Or 1 Wireless Adaptor IEEE802.11 b or b+g for YDT460
Other requirements	Microsoft Internet Explorer 9.0 or later
	Microsoft .NET Framework 3.5 (included in the DIAMAND installation program)

**Note:**

*DIAMAND must be installed and run from a user account with administrator rights.*

*(\*) When operating with Windows 10, and only when the VCI is not recognized (see settings in DIAMAND), the user needs to run the USB driver update file **DelphiUSBDriverUpdate.bat** located in “**..\DIAMAND\USBDrivers**”.*

*(\*\*) WiFi may not work.*

<sup>1</sup> Windows 2000, Windows Server 2003 and Windows XP are no longer supported.